

MOTOR DATA SHEET

DS-APM-/04/24

Motor Designation
APM 2.2 kW 2p 90L
APMEKL2JTEN



GENERAL CHARACTERISTICS

Frame size	90
Type of construction	B14
Weight [kg]	32.5
Moment of Inertia [kgm ²]	0.0056
Degree of protection	IP69K
Direction of rotation	Both
Method of cooling	IC410
Duty	S1
Insulation class	F
Ambient temperature [°C]	-15/+40
Dielectric Strength Test	2kV 1s

NAMEPLATE DATA and CONNECTION DIAGRAM

ALUMINUM PREMIUM MOTOR

APM 90 B14

Ins.Cl.F Amb. max 40°C IC411 Duty S1

DE 6206.2Z NDE 6206.2Z Weight 32.5 kg

Hz 50 Δ/Y 230/400V Hz 60 Δ/Y 277/480V

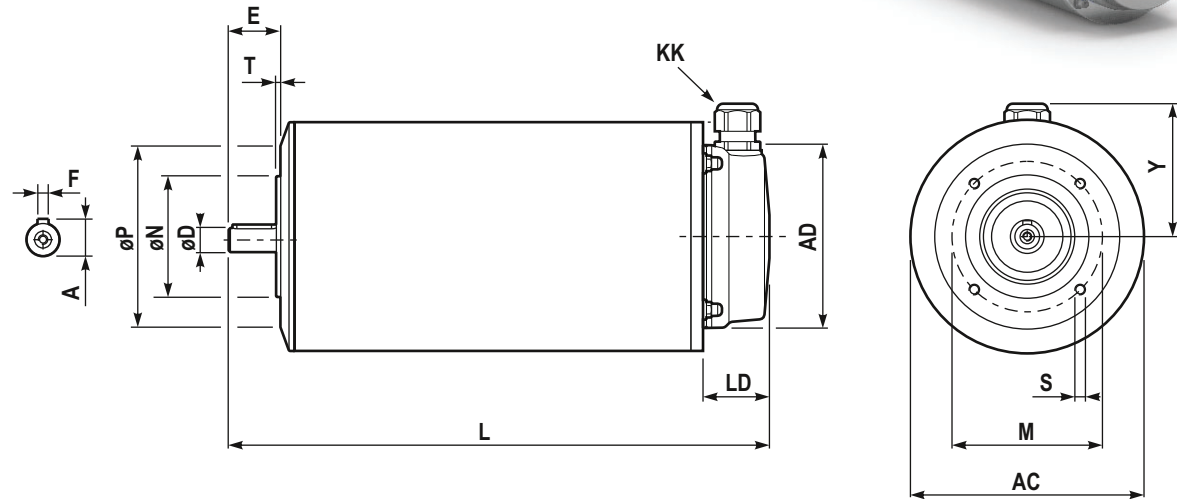
2.2 kW 7.3 / 4.2 A 3 HP 6.8 / 3.9 A

2920 min⁻¹ cosφ 0.82 3545 min⁻¹ PF. 74%

EFF(100%) 86.5 % NEMA DES.- CODE K

INVERTER DUTY

PWM SPEED RANGE 2.5:1: CT / 10:1 VT



DIMENSIONS

AC	Ø183	LD	38.5
AD	Ø143	M	115
Y	97	ØN _{j6}	Ø95
L	386	ØP	Ø140
ØD _{j6}	Ø24	T	3
E	50	n x S	M8x20
F	8	KK ⁽¹⁾	M20x1.5
A	27		

BEARINGS

DE	6206.2Z
NDE	6206.2Z

SPECIAL EXECUTION AND ACCESSORIES

	code
-	
-	
-	
-	