

Motor Designation
APM 0.37 kW 6p 80A
APMDKF6JTEN



MOTOR DATA SHEET DS-APM-05/24

GENERAL CHARACTERISTICS

Frame size	80
Type of construction	B14
Weight [kg]	14.0
Moment of Inertia [kgm ²]	0.0026
Degree of protection	IP69K
Direction of rotation	Both
Method of cooling	IC410
Duty	S1
Insulation class	F
Ambient temperature [°C]	-15/+40
Dielectric Strength Test	2kV 1s

NAMEPLATE DATA and CONNECTION DIAGRAM

ALUMINUM PREMIUM MOTOR

APM 80A6 B14

Ins.Cl.F Amb. max 40°C IC411 Duty S1

DE 6205.2Z NDE 6205.2Z Weight 14.0 Kg

Hz 50 Δ/Y 230/400V Hz 60 Δ/Y 277/480V

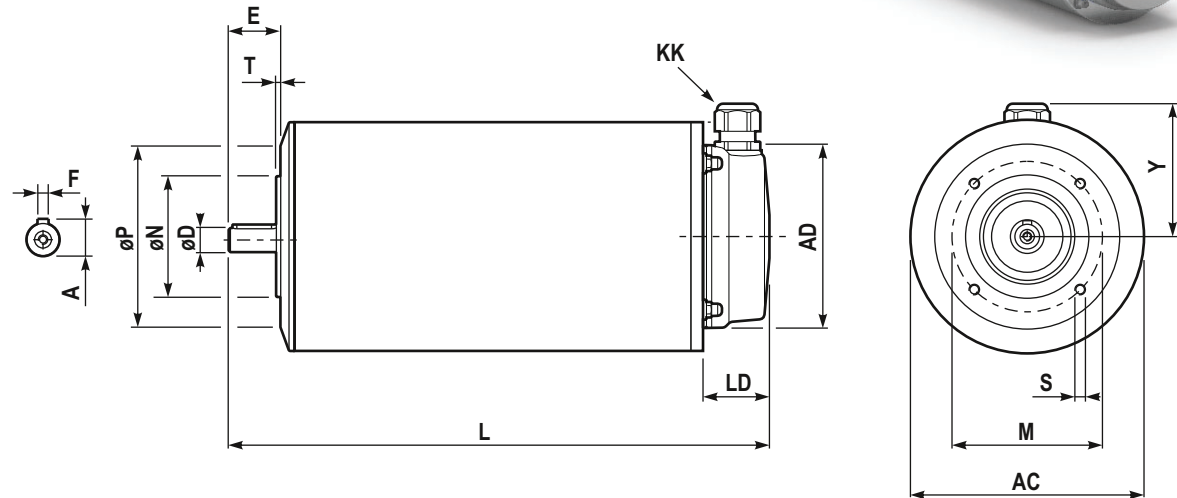
0.37 kW 2.1 / 1.2 A 0.5 HP 1.8 / 1.1 A

890 min⁻¹ cosφ 0.63 1125 min⁻¹ PF. 60%

EFF(100%) 76.3 % NEMA DES.- CODE K

INVERTER DUTY

PWM SPEED RANGE 2.5:1: CT / 10:1 VT



DIMENSIONS

AC	Ø143	LD	38.5
AD	Ø106	M	100
Y	78	ØN _{j6}	Ø80
L	350.5	ØP	Ø120
ØD	Ø19 j6 M6	T	3
E	40	n x S	M6x15
F	6	KK ⁽¹⁾	M20x1.5
A	21.5		

BEARINGS

DE	6203.2Z
NDE	6203.2Z

SPECIAL EXECUTION AND ACCESSORIES

	code
-	
-	
-	
-	