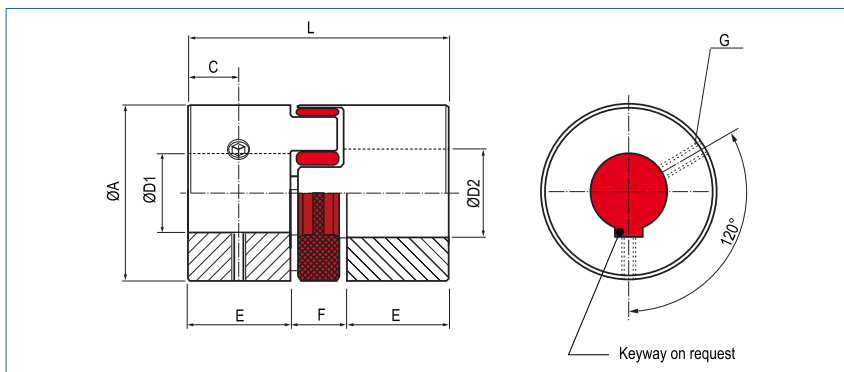
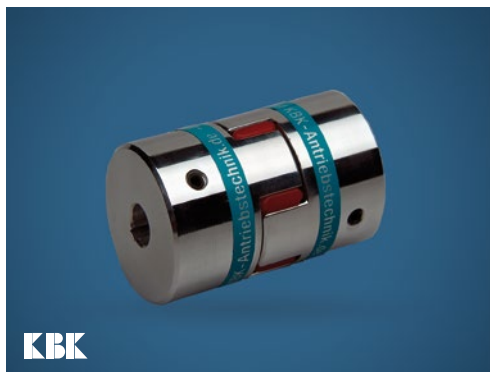


optional full stainless steel version

Servo Insert Coupling

with set screws



Order Code

KBE1 - 14 - 10 - 12 - 98Sh

Type Size ØD1 (H7) ØD2 (H1) Shore-hardness

Size	Dimensions (mm)						Technical Data			Torque (Nm)				
	Ø A Outer Ø	L Length	Ø D1-D2 Bore Sizes (H7) min-max	E	F	C	F Screw (ISO4029) TA (Nm)	max. speed rpm. (1/min)	Mass (per coupling) (g)	Moment of Inertia (per coupling) J (g m²)	64 ShoreD (green)	98 ShoreA (red)	92 ShoreA (yellow)	80 ShoreA (blue)
5	10	15	2 - 6	5	5	2.5	1 x M3 0.5	47500	2.62	0.0000216	x	x	0.5	x
7	14	22	4 - 7	7	8	3.5	2 x M3 1.3	34000	6.5	0.00018	2.4	2	1.2	0.7
9	20	30	6 - 9	10	10	5	2 x M3 1.3	24000	22	0.00105	6	5	3	1.8
12	25	34	6 - 12	11	12	5	1 x M4 3	19500	33	0.00309	12	9	5	3
14	30	35	6 - 16	11	13	5	1 x M4 3	16000	45	0.006	16	12.5	7.5	4
19	40	66	10 - 24	25	16	10	1 x M5 6	12000	187	0.040	26	21	12	6
24	55	78	16 - 28	30	18	10	1 x M5 6	8500	420	0.171	75	60	35	17
28	65	90	20 - 38	35	20	15	1 x M6 11	7200	577	0.368	200	160	95	46
38	80	114	20 - 45	45	24	15	1 x M8 25	6000	1200	1125	405	325	190	x
42	95	126	20 - 55	50	26	20	1 x M8 25	4800	1850	16103	560	450	265	x
48	105	140	20 - 60	56	28	20	1 x M8 25	4300	2562	4124	655	525	310	x
55	120	160	20 - 65	65	30	26	1 x M10 84	4000	3280	7.663	825	685	410	x

+ **Material** hub - aluminium
 spider element - polyurethane
Hub bore tolerance: H7
Keyway optional acc. DIN 6885

Further spider elements and technical data are available on page 44 and 45.
 All series are available with loose-fit spiders (see page 45).