

Motor Designation
APM 0.25 kW 2p 63B
APMBKE2JTEN



MOTOR DATA SHEET DS-APM-12/23

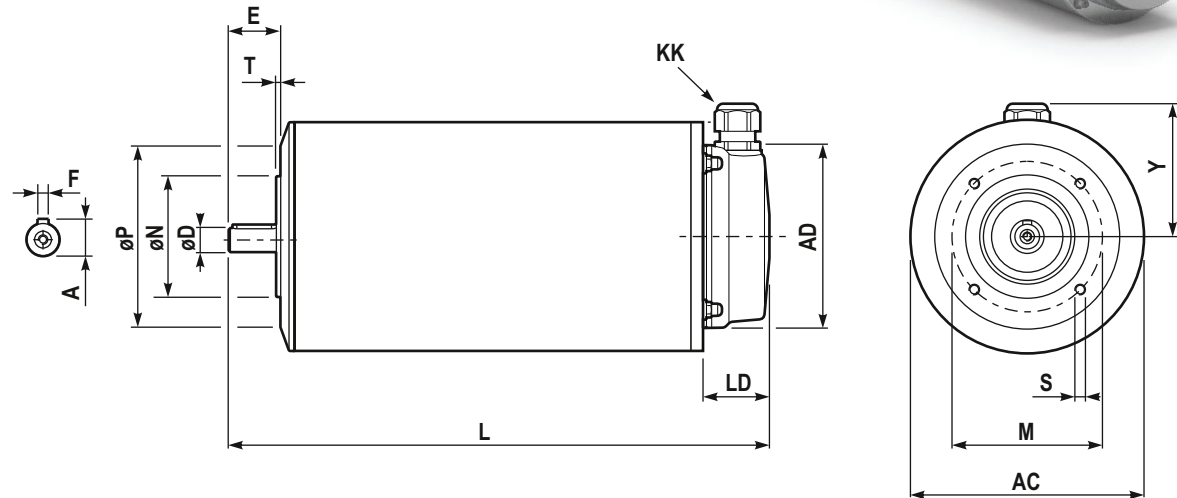
GENERAL CHARACTERISTICS

Frame size	63
Type of construction	B14
Weight [kg]	8.3
Moment of Inertia [kgm ²]	0.0006
Degree of protection	IP69K
Direction of rotation	Both
Method of cooling	IC410
Duty	S1
Insulation class	F
Ambient temperature [°C]	-15/+40
Dielectric Strength Test	2kV 1s

NAMEPLATE DATA and CONNECTION DIAGRAM

ALUMINUM PREMIUM MOTOR APM 63 B14

Ins.Cl.F Amb. max 40°C IC411 Duty S1
 DE 6203.2Z NDE 6203.2Z Weight 8.3 Kg
 Hz 50 Δ/Y 230/400V Hz 60 Δ/Y 277/480V
 0.25 kW 1/0.6 A 0.33 HP 1/0.6 A
 2895 min⁻¹ cosφ 0.85 3503 min⁻¹ PF. 77%
 EFF(100%) 71.3 % NEMA DES.- CODE K
 INVERTER DUTY
 PWM SPEED RANGE 2.5:1: CT / 10:1 VT



DIMENSIONS

AC	Ø133	LD	38.5
AD	Ø106	M	75
Y	78	ØN _{j6}	Ø60
L	264	ØP	Ø90
ØD _{j6}	Ø11	T	2.5
E	23	n x S	M5x14
F	4	KK ⁽¹⁾	M20x1.5
A	12.5		

BEARINGS

DE	6203.2Z
NDE	6203.2Z

SPECIAL EXECUTION AND ACCESSORIES

	code
-	
-	
-	
-	