



## MOTOR DATA SHEET DS-APM-05/24

### GENERAL CHARACTERISTICS

Frame size	90
Type of construction	B14
Weight [kg]	32.5
Moment of Inertia [kgm <sup>2</sup> ]	0.0107
Degree of protection	IP69K
Direction of rotation	Both
Method of cooling	IC410
Duty	S1
Insulation class	F
Ambient temperature [°C]	-15/+40
Dielectric Strength Test	2kV 1s

### NAMEPLATE DATA and CONNECTION DIAGRAM

## ALUMINUM PREMIUM MOTOR APM 90L6 B14

Ins.Cl.F Amb. max 40°C IC411 Duty S1

DE 6206.2Z NDE 6206.2Z Weight 32.5 Kg

Hz 50 Δ/Y 230/400V Hz 60 Δ/Y 277/480V

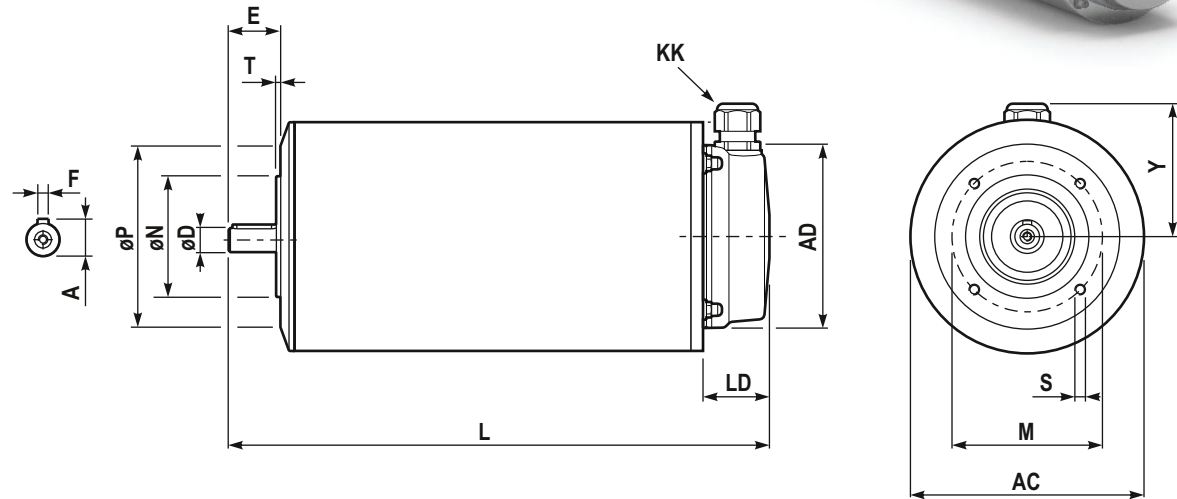
1.1 kW 4.2 / 2.4 A 1.5 HP 3.8 / 2.2 A

950 min<sup>-1</sup> cosφ 0.78 1140 min<sup>-1</sup> PF. 80%

EFF(100%) 84.5 % NEMA DES.- CODE K

INVERTER DUTY

PWM SPEED RANGE 2.5:1: CT / 10:1 VT



### DIMENSIONS

AC	Ø183	LD	38.5
AD	Ø143	M	115
Y	97	ØN <sub>j6</sub>	Ø95
L	386	ØP	Ø140
ØD	Ø24 j6 M8	T	3
E	50	n x S	M8x20
F	8	KK <sup>(1)</sup>	M20x1.5
A	27		

### BEARINGS

DE	6206.2Z
NDE	6206.2Z

### SPECIAL EXECUTION AND ACCESSORIES

	code
-	
-	
-	
-	