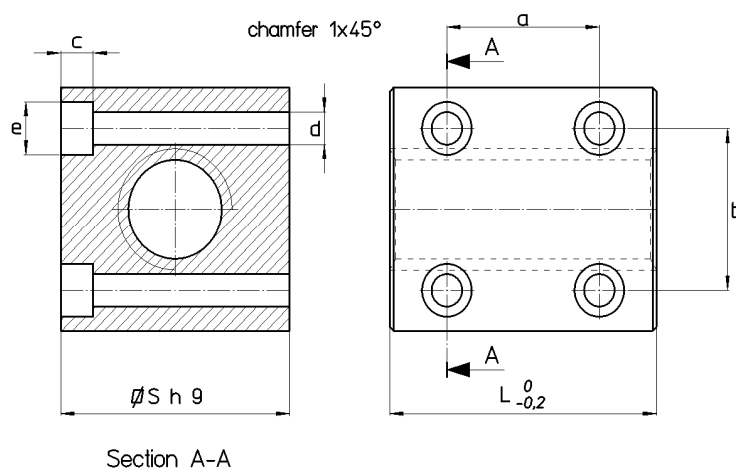


Trapezoidal nut type QBF – Bronze square nut with holes

Material: EN 1982 Cu Sn12-C – CC483K

Tin bronze nut suitable for movements with modest loads. It is recommended for its fixing comfort and for its good wear resistance.



| Nut Stock no. RIGHT | Nut Stock no. LEFT | Diameter x lead | Thread starts | S mm | L mm | a mm | b mm | c mm | d mm | e mm | Fixing allen screws UNI 5931 | Wt. kg/each | At mm ² (1) |
|----------------------------|---------------------------|------------------------|---------------|------|------|------|------|------|------|------|------------------------------|-------------|------------------------|
| QBF 16 A R | QBF 16 A L | Tr 16x4 | 1 | 35 | 40 | 26 | 24 | 5.2 | 5 | 9,5 | M5 | 0.340 | 880 |
| QBF 20 A R | QBF 20 A L | Tr 20x4 | 1 | 40 | 50 | 38 | 28 | 6.5 | 6 | 10 | M6 | 0.576 | 1412 |
| QBF 25 A R | QBF 25 A L | Tr 25x5 | 1 | 45 | 55 | 40 | 33 | 6.5 | 6 | 10 | M6 | 0.725 | 1943 |
| QBF 30 A R | QBF 30 A L | Tr 30x6 | 1 | 50 | 60 | 49 | 38 | 6.5 | 6 | 10 | M6 | 0.977 | 2544 |
| QBF 40 A R | QBF 40 A L | Tr 40x7 | 1 | 60 | 75 | 55 | 49 | 8.5 | 8 | 9.9 | M8 (3) | 1.608 | 4013 |

(1) Total bearing surface between screw and nut teeth on plane perpendicular to axis.

(3) Special M8 fixing screw with a reduced head screw diameter.