



## MOTOR DATA SHEET DS-APM-/04/24

### GENERAL CHARACTERISTICS

Frame size	71
Type of construction	B14
Weight [kg]	11.6
Moment of Inertia [kgm <sup>2</sup> ]	0.0010
Degree of protection	IP69K
Direction of rotation	Both
Method of cooling	IC410
Duty	S1
Insulation class	F
Ambient temperature [°C]	-15/+40
Dielectric Strength Test	2kV 1s

### NAMEPLATE DATA and CONNECTION DIAGRAM

## ALUMINUM PREMIUM MOTOR APM 71 B14

Ins.Cl.F Amb. max 40°C IC411 Duty S1

DE 6203.2Z NDE 6203.2Z Weight 11.6 Kg

Hz 50 Δ/Y 230/400V Hz 60 Δ/Y 277/480V

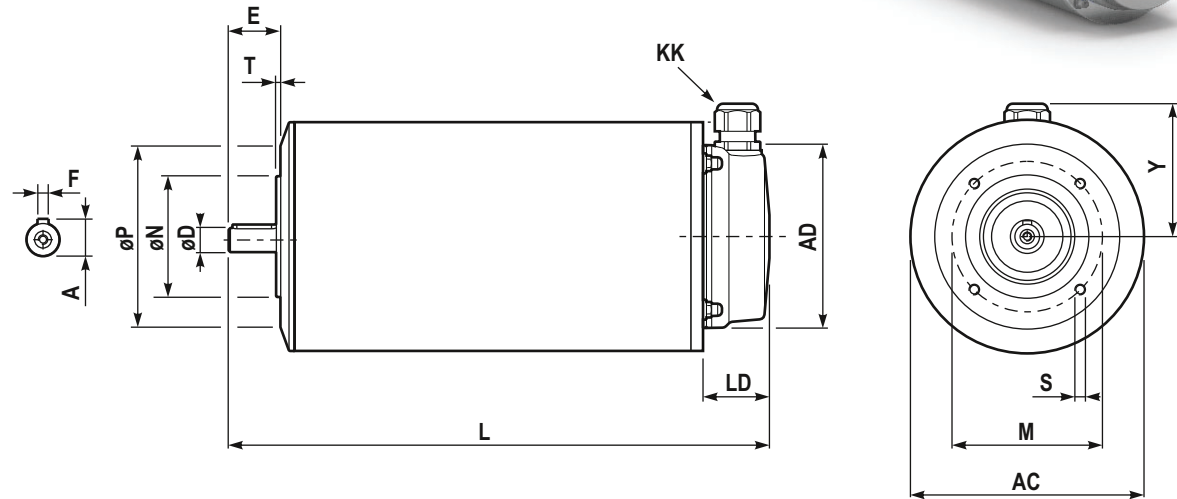
0.55 kW 2.2 / 1.3 A 0.75 HP 2.0 / 1.2 A

2910 min<sup>-1</sup> cosφ 0.77 3521 min<sup>-1</sup> PF. 74%

EFF(100%) 82.5 % NEMA DES.- CODE K

INVERTER DUTY

PWM SPEED RANGE 2.5:1: CT / 10:1 VT



### DIMENSIONS

AC	Ø133	LD	38.5
AD	Ø106	M	85
Y	78	ØN <sub>j6</sub>	Ø70
L	311	ØP	Ø105
ØD <sub>j6</sub>	Ø14	T	2.5
E	30	n x S	M6x15
F	5	KK <sup>(1)</sup>	M20x1.5
A	16		

### BEARINGS

DE	6203.2Z
NDE	6203.2Z

### SPECIAL EXECUTION AND ACCESSORIES

	code
-	
-	
-	
-	