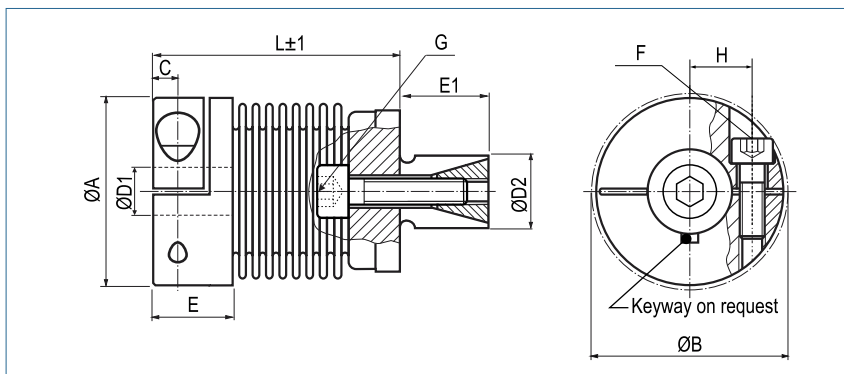


**Metal Bellows Coupling**

with expanding clamps

optional  
laserwelded  
optional full stainless  
steel version

optional chem.  
nickel-plated



**Order Code**

<b>KB8 / 30</b>	-	<b>53</b>	-	<b>15</b>	-	<b>20</b>	-	<b>S</b>
Type / Size		Length L		ØD1 (H7)		ØD2 (f7)		Options

Size	Torque TKN (Nm)	Dimensions (mm)										Technical Data								
		L	Ø A	D1	D2	H	C	E	E1	B	F/G	Mass (kg)	Moment of Inertia J (g m²)	Spring Stiffness			Misalignment			max. speed (min-1)
		Length	Outer Ø	Bore Size (H7) min-max	(f7) min-max						Screw (ISO4762) TA (Nm)			torsional CT 10³ (Nm/rad)	radial CR (N/mm)	axial CA (N/mm)	radial ΔKr (mm)	axial ΔKa (mm)	angular ΔKw (°)	
18	18	45	45	10-25.4	13-25	17	5.5	17.5	20	47.4	M5	0.14	0.04	20	205	50	0.2	0.5	1.5	12800
		8									0.15	0.05	15	82	35	0.25	0.5	2	12800	
30	30	53	56	10-32	14-30	20	7.5	24.5	25	56.4	M6	0.30	0.15	38	720	50	0.15	0.6	1.5	10300
		15		0.31							0.16	28	225	28	0.25	1.0	2	10300		
60	60	62	66	12-35	23-38	23	10	29	27	66	M8	0.40	0.28	75	1150	90	0.15	0.6	1.5	8700
		40									0.42	0.31	50	340	50	0.25	1.0	2	8700	
150	150	71	82	14-44	26-42	28	11	33.5	32	82.9	M10	0.80	0.90	155	2020	145	0.2	0.5	1.5	6900
		84									0.85	0.95	105	595	85	0.25	0.5	2	6900	
300	300	84	110	20-60	38-60	39	13	38	45	110	M12	1.62	3.28	502	6300	280	0.2	0.5	1.5	6000
		145									1.66	3.37	285	1400	145	0.25	0.8	2	6000	
500	500	87.5	122	25-70	58-80	42	15	42	50	122	M12	3.33	5.32	690	7790	100	0.2	0.5	1.5	5000
		98.5									3.43	5.43	320	970	85	0.25	1	2	5000	

<b>Material</b>	bellows – stainless steel collet clamps - aluminium expanding clamps - steel
<b>Hub and Hollow Shaft</b>	bore tolerance: H7
<b>Keyway</b>	optional acc. DIN 6885 biggest bore marked with a #
<b>Temperature Range</b>	-30 °C ~ 120 °C